



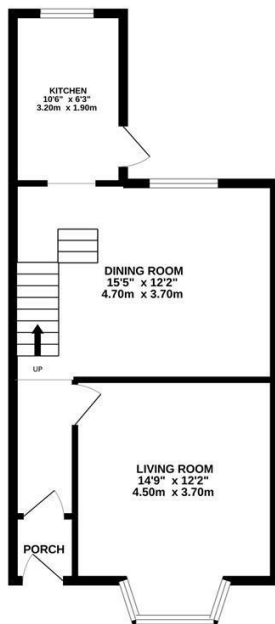
Mount Pleasant Road, Hastings TN34 3SB

Offers in excess of £250,000

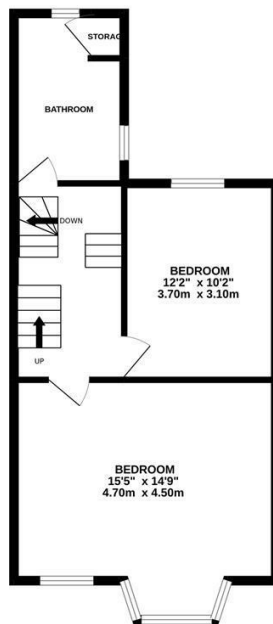


Spacious FOUR BEDROOM, three storey VICTORIAN HOUSE located in an idyllic position within immediate walking distance of local shops, Ore railway station, Alexandra Park and Hastings Old Town where there is also mainline railway station. The accommodation here is arranged as a BRIGHT BAY FRONTED LIVING ROOM with a feature fireplace and there is a separate dining room which enjoys a rear aspect and leads through to the MODERN FITTED KITCHEN with ample storage space and access out to the garden. Spanning the two upper floors are FOUR WELL PROPORTIONED DOUBLE BEDROOMS with a family bathroom on each level. The rear garden enjoys an area of patio with an expanse of lawn beyond, bordered by mature shrubs along with handy REAR ACCESS. Being sold with NO ONWARD CHAIN, this fantastic property offers great SCOPE FOR POTENTIAL and is not to be missed.

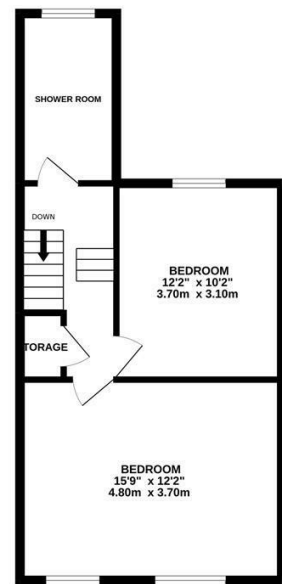
GROUND FLOOR
482 sq.ft. (44.7 sq.m.) approx.



1ST FLOOR
482 sq.ft. (44.7 sq.m.) approx.



2ND FLOOR
459 sq.ft. (42.7 sq.m.) approx.



TOTAL FLOOR AREA: 1422 sq.ft. (132.1 sq.m.) approx.

Whilst every attempt has been made to ensure the accuracy of the floorplan contained here, measurements of doors, windows, rooms and any other items are approximate and no responsibility is taken for any error, omission or mis-statement. This plan is for illustrative purposes only and should be used as such by any prospective purchaser. The services, systems and appliances shown have not been tested and no guarantee as to their operability or efficiency can be given.

Made with Metropix ©2022

